

THE BRIDGE



Connecting the Past to the Present where the Rock River meets the Yellowstone Trail

Vol 1 #3

May 2025

Official Newsletter of Theresa Historical Society
Theresa, Wisconsin

Theresa On The Yellowstone Trail



**SATURDAY
JUNE 7th 9AM-3PM**

THERESA HISTORICAL SOCIETY CAMPUS GROUNDS Hwy 175 Downtown Theresa

Come Celebrate the 2nd Annual Yellowstone Trail Day with us! The historical societies of Byron, Lomira, Theresa and the Edward H. Wolf/Slinger Historical Society at Slinger are concurrently celebrating Yellowstone trail day on Saturday, June 7th.

Mark the date and take a drive up or down Wisconsin Highway 175 and stop at the campuses of the participating societies and learn about the history of the Yellowstone Trail, one of American foremost roads to travel across the country in the early days of motoring.

Each society will have an open house detailing local history and area history concerning America's premier highway, the Yellowstone trail which ran across the northern United States from Puget Sound to the Pacific Coast.

In Theresa, the Yellowstone Trail ran right through the middle of town and today is Hwy 175. Our Theresa Historical Society is adjacent to 175 on downtown Theresa. Stop in and see us! For more details, see the feature story and complete details elsewhere in this issue.

Theresa Historical Society

Receives Donation

From Fox Brother's Piggly Wiggly

The Theresa Historical Society recently received a generous donation of \$4,206 from Fox Brothers Piggly Wiggly- Mayville through their Charity of the Month program. THS says thank you Fox Brothers for your generosity and support.

Fox Brother's Piggly Wiggly has been a strong supporter of community affairs in the area their stores serve since the company's inception in 1988. Once again THS salutes Fox Brother's for their generosity and support

Les Beck's: It Happened in Theresa

1st white child born in village of Theresa was Albert Schrauth in 1854

From The Editor

We are only a few weeks away for our first campus open house of the year on Saturday July 7th, starting at 9 AM. We are also celebrating our annual Yellowstone Trail Day, so welcome to this special Yellowstone Trail issue. It's also time to dust covers of the furniture in the Juneau & Schiefer house as well as and tidying up the displays in the Beck Tourist cabin and the Reklau log cabin. We hope you'll join us for a fun day and enjoy learning about the rich history of our area.

We are also very excited by the overwhelming positive response to publication of our 1st two newsletters. It is truly gratifying to hear all nice comments from you, our readers. Our goal is to make our newsletter the best it can be and bring you interesting stories and information about the past and present. It is our hope some of you will help us preserve a history and help leave legacy to our area. We hope you'll join us and become a member.

Next a big welcome our newest members James Shaefer, Mitch Musack, Diane Boehm, Dale Christian, Jack Schark, and Dave & Christine Steger. We welcome any historical information & stories you care to share about our area. Help us preserve our area history.

Rob Bowe Editor



Its 1995: John Bodden and Les Beck dedicate the placement of the old Theresa Public School Bell. The bell called children to school for 65 years. Theresa school children look on.

THERESA HISTORICAL SOCIETY MEETING NEWS.

At the recent April meeting, officers were elected for the coming year. Outgoing President Jim Polster handed the gavel over to newly elected President Jim Rodell. Rob Bowe was chosen Vice President. Alice Mirk is the THS museum curator. Ms. Mirk announced she is retiring later in summer and Jim Polster will take over as THS Museum curator at that time. Cindy Bowe is the new secretary and Kathy Benter continues on as treasurer.

Plans for renovating the Koll Wagon Pavilion were reviewed and discussions were held concerning fund raising for that building. Cindy Bowe volunteered to look in to grant programs. Rob Bowe reported on the current status of The Bridge newsletter and detailed future plans for improving and distribution of the publication and improved public relations with the community. Bowe also talked about progress in community outreach. Rob reported that in cooperation with the Village of Theresa, The Bridge newsletter is now on the Theresa Village website.

Jim Rodell discussed plans and shared information about the planning of the upcoming Yellowstone Trail day. THS will again be working with the Bryon, Lomira, and The Edward R Wolf Museum/Slinger Historical Society.

Bob Beck volunteered to do the final staging and repair work at the Schiefer House.



Published by: Theresa Historical Society

Jim Rodell: President

Rob Bowe : Vice President

Cindy Bowe: Secretary

Kathy Benter: Treasurer

Alice Mirk: Theresa Historical Society Museum Curator

Contact Us by email: famousrobbo@gmail.com

Mailing Address c/o

R. Bowe 105 Schnitzler Dr., Theresa, WI, 53091



President's Message

"Remembering Those Before Us"

As we celebrate Memorial Day, let us remember those who paved the way before us. As Americans, we are thankful for the founding fathers of the United States and those who fought to preserve our nation and its liberties.

Almost 200 years have passed since Solomon Juneau built an outpost among the native people living in this beautiful place along the Rock River surrounded by rolling hills. Since then, many have contributed to building this community we love with their hard work, dedication, and pioneer spirit.

Theresa Historical Society was founded in 1956. However, the roots of historic preservation began much earlier. Early Theresa citizens preserved history for the future by maintaining buildings, saving artifacts, taking photographs, and recording stories and information. It is because of those with foresight that the community of Theresa has the historic treasures which it possesses today.

Theresa Historical Society, the community of Theresa, and those who love history are indebted to our past resident harness maker and village constable, Joseph Gottwald.

When the deteriorated 1847 home of Solomon and Jo-sette Juneau was slated for demolition, Mr. Gottwald stepped in to purchase the home in 1932 before it was lost. His action led to the Works Progress Administration project of constructing the landmark **THERESA** limestone wall by men needing work and paychecks during the Great Depression. Next, the Juneau House was moved 200 feet from its former location just east of the alley and south of the present green stable building on top of the hill.

The house was restored, and on May 21, 1938 the Juneau House was dedicated and commemorated with a bronze marker provided by the Dodge County Federation of Women's Clubs on a large rock at the bottom of the wall.

Over the years, Theresa Historical Society has benefited from a series of dedicated leaders who continued the mission of preserving Theresa history and sharing knowledge

with the next generation while adding buildings and artifacts along the way. Our most recent addition to Theresa Historical Society's structures is the Beck Tourist Cabin, a relic from the era when U.S. Highway 15 (later Hwy. 41) went through the center of the village and early automobile travelers following the Yellowstone Trail needed a place to spend the night. We are grateful to our most recent past-president, Mr. Jim Polster, for his actions in saving this important piece of Theresa history for future generations to enjoy, much like Joseph Gottwald did some 80 years prior.

At our April 21 meeting, President Polster announced that after 13 years of service, he did not seek re-election.

Officers of the Theresa Historical Society for 2025-2026 are the following: President Jim Rodell, Vice president Rob Bowe, Secretary Cindy Bowe, Treasurer Kathy Benter

Many thanks to Jim Polster for serving as our president. We look forward to his future roles as curator and also as past-president to serve as a mentor to me and others.

Many thanks to our outgoing secretary, Alice Mirk. She has done a wonderful job as a dedicated secretary and will continue to serve as curator through August. She has contributed much to Theresa Historical Society and we look forward to her continued involvement as she is willing and able to do.

Many thanks to Kathy Benter for her past service as treasurer, and we are grateful that she will continue in that role. Many thanks to Rob Bowe for becoming vice president along with his role as editor of our newsletter, The Bridge, which began in January. Rob has a passion for history and communication.

Many thanks to Cindy Bowe for becoming our new secretary. We look forward to the talents which Cindy will bring to Theresa Historical Society.

Many thanks for the opportunity to serve as your next president of Theresa Historical Society. It is a pleasure to be a member of this organization and I am honored to be chosen to fulfill a leadership role.

James Rodell, Jr.

President, Theresa Historical Society

Theresa Historical Society
Preserving the Past For Tomorrow

YELLOWSTONE TRAIL DAY RETURNS!

JOIN US!

The annual Yellowstone Trail Celebration returns to the Historical Society Campuses of Slinger, Theresa, Lomira and Byron on Saturday, June 7th.

All 4 communities are located on the Old Yellowstone Trail route, Wi. Hwy 175 and will be participating in the celebration. Last year was the first year the four groups collaborated to celebrate of the establishment of the original Yellowstone Trail. This coast to coast national highway started in 1912. It was the first route the went across the northern tier of the USA all the way from Cape Cod to Puget Sound. The Yellowstone road literally put these 4 communities on the national map.

The Yellowstone Trail entered Wisconsin at the Illinois - Wisconsin border near Pleasant Prairie then took a northwesterly route through Wisconsin to Minnesota and beyond.

We invite all of you to come to Theresa and stop by our THS Campus to explore and learn about not only the history of the Yellowstone trail but also learn more about the colorful history of the Theresa area .

When you're done visiting our THS Campus in Theresa take a short drive in either direction and visit the other participating Historical Society campuses to the north at Lomira and Byron or south at Slinger. It's great way to take to take a relaxing historical drive through the Wisconsin countryside on Wisconsin Hwy 175. So take spin and join us on Saturday in June 7



**Yellowstone Trail
Across Wisconsin**



Solomon Juneau Home and Beck Tourist Cabin

Settlement Stories

By Rob Bowe



The road from Milwaukee to Theresa, Lomira, Byron, Fond du lac, up to Appleton started out as a series of paths cut through the dense primeval forest. In the earliest days these over land paths would connect a native American village to their hunting grounds or perhaps the village of another tribe. The trail was marked by rock piles and bending trees to show the way as the constant growing vegetation reclaimed and covered the occasional path.

Solomon Juneau of Milwaukee and founder of Theresa opened his trading post at Theresa in 1833 and the traffic on the trail increased. By the 1850's, one could go by wagon and oxen to Milwaukee from Theresa in 3 days. As commerce brought goods & people up the trail, market goods from Theresa area farmers started to flow south.

There were no major rivers on most of the Milwaukee-Theresa trail, just an occasional creek, so bridges were not needed on the early trail. The small creeks were fordable, with small log bridges covering a creek here and there. As a result, one could travel between the outposts, not only by walking, but also by ox and wagon.

The first road system was laid out by the Theresa township board in 1849 and slowly work began on road improvements. The roads were not as we know them today. They were mostly dirt and sand roads, filled with wagon ruts, scattered rocks and chuck holes with tall trees lining the road. When it rained, the roads became mud mires. The cost and trail improvements fell on the township. The pioneers worked together providing most of the labor. A pioneer settler was expected to provide 1 day of labor per year working on township roads for every 80 acres owned.

In 1851, the first wooden bridge was built across the narrows of the Rock River at Theresa by John Curtis. The cost was \$294. Now loads could go straight through to Fond du lac all the way to Appleton. More bridges would follow in the township. Another bridge was built several miles downstream from Theresa at the Lichtenberg farm. The Lichtenberg bridge was a bit over 100 feet long and created a short cut into Mayville that is today Cty AY at Mc Arthur Road. The cost of that bridge was \$368.

About this same time cattle buyers started coming to Theresa to buy livestock, driving them down the trail from



HWY 15 at Fussville (Menomonee Falls) n 1916. St Anthony's church in background. Today Appleton Ave., Hwy 175 Photo Forgotten Wisconsin

Theresa, through Nenno, Addison, St. Lawrence, Schleisingerville (Slinger), Ackerville, Richfield, Fussville (Menomonee Falls) into Milwaukee. Farmers also sent wagons loads of grain, hay and dairy products to feed the livestock and the 20,000 people living in the Milwaukee area.

By 1874, the wood bridge at Theresa was no longer able to handle the increased traffic and loads. That year Fred Fisher built a stone bridge across the river at Theresa. The cost was \$3,350. Two years later, the village of Theresa laid its first storm sewer down the main street to the river improving the village infrastructure. Next, Mill Pond Road was graded and graveled in 1884, and what would become Highway 28 across the Theresa marsh was built with a base of Tamarack trees logs, overlaid by rocks, dirt and gravel connecting Theresa to the east via Kewaskum and Campbellsport.

By the 1890s, most of the well-traveled roads improved a bit. A trotting and buggy could go at a good clip in good dry weather. Now you could travel by horse and buggy from Theresa to the Holy Hill area in about 6 hours. Freight and people were moved by dray lines and stage lines between villages but advancement in road construction was lacking. It was still dirt, clay, sand and some occasional gravel on the road and during the wet season it was a quagmire.

At the turn of the century, there was a new kid on the block, the automobile. Now the State of Wisconsin began work on planning road improvements and raising money for road improvements. In Theresa, John Gerlach brought the 1st car in Theresa village in 1903. A new horseless carriage made by Henry Ford. The contraption made horses skitter and aggravated the hell out of those who drove horses. (Next Page)

Les Beck's It happened In Theresa

1855 Theresa Township issues 5 saloon licenses @\$10 each



One of the earliest cars in the Theresa area was this 1910 Ford Model A owned by Theresa township farmer Ferdinand Chistian shown here with his wife Rosalina Calles Christian, along with his brother and sister in-laws, August and Emma Callies Dobberpuhl & family.

1924 map of the Yellowstone Trail, Wisconsin Hwy 15, through, Slinger, Theresa, Lomira and Byron. Today it is Wisconsin Hwy 175

Naturally, the new-fangled-horseless carriages caused a stir wherever they went. It wasn't long and motor cars zoomed up and down the Theresa-Milwaukee Road at speeds approaching 20 MPH on some stretches. The village of Theresa bought a new-fangled street grader in 1907 to keep the roads in the village in good shape and added a road plow (horse-drawn bucket scraper) a few years later as traffic on the trail increased.

In 1912 the road/trail from Milwaukee north via Theresa to Fond du lac & Appleton still did not have an official highway title. It was still a dirt road with some macadam gravel laid down in some areas. That same year the Yellowstone Trail came into being. It was the first coast-to-coast automobile route across the northern United States. It started at Plymouth, Massachusetts, where the original pilgrims had landed and went west, all the way to Puget Sound, Washington via Yellowstone National Park and the dirt road through Theresa was chosen to be on the Yellowstone Trail route.

That same year, Haessly & Jung who ran a livery stable and stage line in Theresa, opened a garage service that provided automobile transportation to the public.

The State of Wisconsin announced an official Highway System across the state in 1915. It designated the old trail from Milwaukee-Fond du lac-Appleton via Theresa and Lomira as State Highway 15. The next year 1916, Hwy 15 was officially designated as part of the Yellowstone Trail. Theresa was on the national map.

Cars were now becoming popular and affordable. Even some farm folks were buying cars. New car prices started at \$495.

With the increase in traffic through Theresa, a new phenomenon was occurring, and local businesspeople were starting to benefit as tourists started coming through town and spending money. Gasoline Filling Stations and car repair shops started to pop up. At its peak, Theresa would have no less than 9 service stations. Car dealerships came next, and the local hotels and restaurant/saloons profited from the passerbys. Meanwhile the traffic on Hwy 15 increased, and road improvements did not. Like most roads of the day, Hwy 15 turned into a quagmire when it rained.

Around 1920 major improvements in road paving were occurring all up and down State Hwy 15. The next year 1922, State Hwy 15 through Theresa was paved. In 1927, the Yellowstone through Theresa was renamed US 41 and it became the busiest north/south highway in the state and would continue so until the 1955 opening of the new 4-lane freeway, 2 miles east of Theresa. The US 41 designation went to the new road and the highway through the heart of Theresa was redesignated as Wisconsin State Highway 175 which remains today. Theresa's fame and fortune vanished. Today, Theresa is a quiet village and nice place to live, home to 1242 people.

Les Beck's: It happened In Theresa

1912 inflation makes the half-penny obsolete.

Previous to 1921 the Yellowstone Trail=Wisconsin Highway 15 was a macadam road (dirt and gravel) in the rural areas of most of Wisconsin. In Theresa, the highway ran right down the dirt main street of town, Milwaukee St. Improved grading paving and bridge building in Waukesha, Washington Dodge County and north began in 1921



Building the Yellowstone Trail



Road Grading and construction in the 1920-30s was done by man, machine and horses. Left: Crews of with horse-drawn road plow scoops construct a new grade to straighten out the old dirt road. Above: manpower horsepower and the latest technology in laying concrete pave a stretch of Highway 15 near Fussville/Menomonee Falls.

Downtown Theresa, 1921. A steam shovel fills horse-drawn dump wagon as the paving of Hwy 15, Theresa's main street commences. Corner of Henni & Milwaukee St. The buildings behind are Beck Furniture, today the Pioneer Keg bar & Grill. The man standing in the shadow under the awning is Fred Beck. Photo was taken by Mrs. Fred Bandlow.

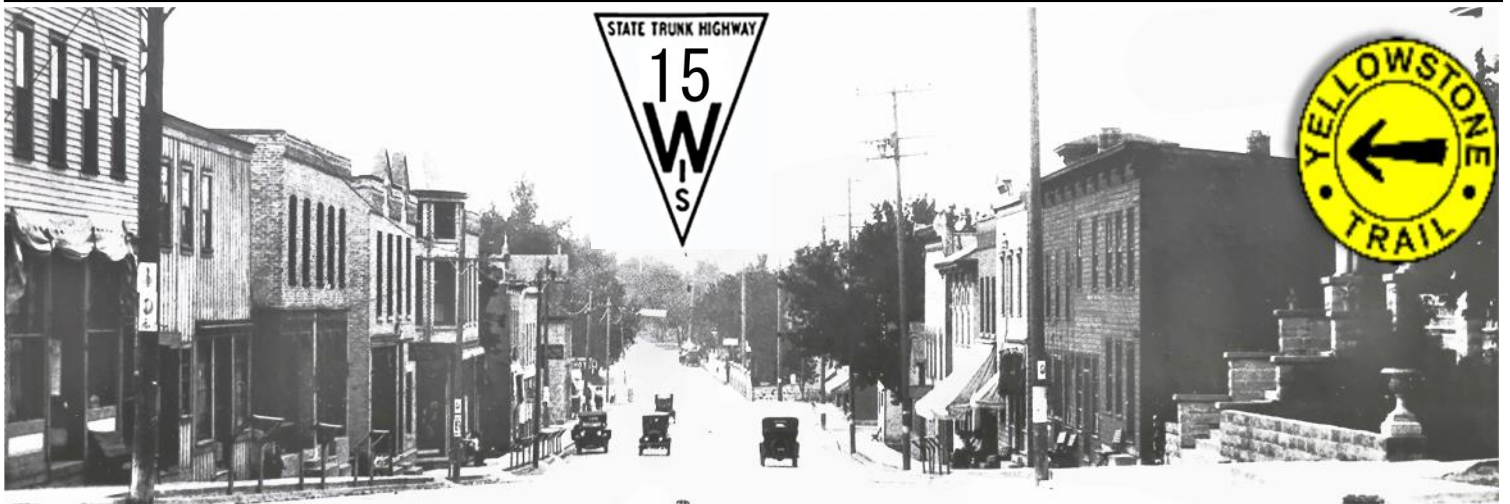


WE WANT YOU! Join The Theresa Historical Society



AUGUST, 1922 The final link in paving the Yellowstone Trail, (HWY 15) in the area, Limestone Creek Bridge. Between Addison Center and St. Lawrence.

Photo taken by Emil Beck



1922 Newly paved Yellowstone Trail, Wisconsin Highway 15. Downtown Theresa with its wide paved concrete street looking north. Beck Furniture on the right. Fred Bandlow house on the right. In 1927 the highway was designated as US Hwy 41 and was the major north-south throughfare in Wisconsin. With the construction of a new 4 lane freeway, 2 miles east in 1955, the highway was redesignated as Wisconsin 175.

If you are in town for Yellowstone Trail Days or any day, consider stopping off for some refreshments and great food at *The Pioneer Keg Bar and Grill* right across the street from our THS Campus Milwaukee St. If its sweets and treats you crave, go one block north and get your fill at *The Confectionary by Joel*. Home of amazing chocolates, unusual sweet treats, gifts, and ice cream too. In the old days Weber Brewery made Theresa famous, but today you need to try Widmer's Cheese. Widmer's Cheese cellars are just two blocks due west of our THS campus on Henni St. Widmer's Cheese Cellars is home to world renowned award winning Brick, Cheddar and Colby Cheese. The Widmer family has been making cheese in the Theresa community for 103 years.

Business Places On the Yellowstone Trail That Are Gone



Bachhuber Ford on the right was where Theresa State Bank is now located. Prior to 1922, the street is still dirt



Above

Theresa Auto Company, starting as a Buick and Regal dealership, later selling Chevrolets, was located where the Shell gas station is now located.



On the southeast corner of Depot Road (DD) and Hwy. 175 was John Beck's service station, along with an early drive-in which sold refreshments to travelers.



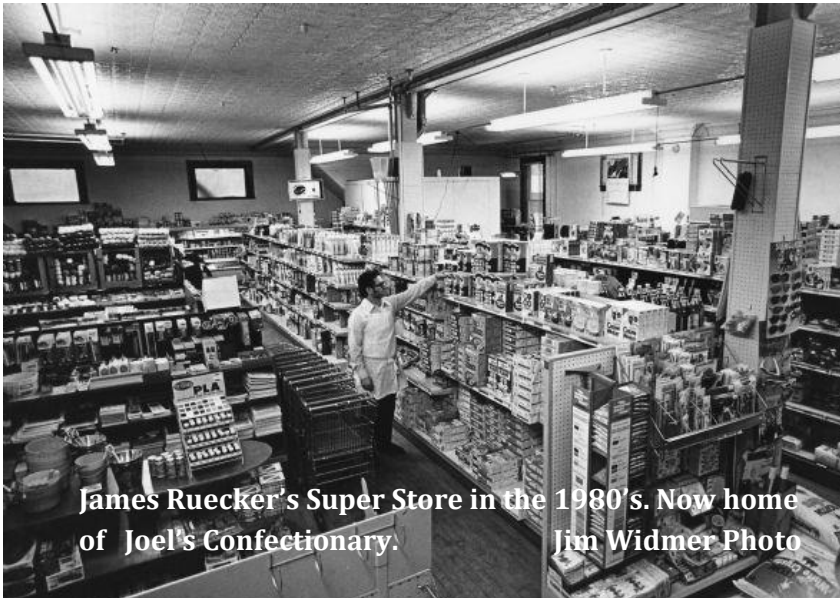
Louis Beck Motors, a Dodge dealership and garage and Beck Tourist Cabins located on the south edge of Theresa on the Yellowstone Trail. The tourist cabins were a lodging option for travelers on the Yellowstone trail. Tourist cabin such these were the forerunnes of today's motels. The cabins offered a bed for 50 cents a night, single travelers of the same gender could share the other bed in the cabin obtaining privacy with by drawing a curtain down the middle of the cabin between the beds the beds in the cabins. One of the original cabins (color picture) is preserved at the Theresa Historical Society Campus grounds



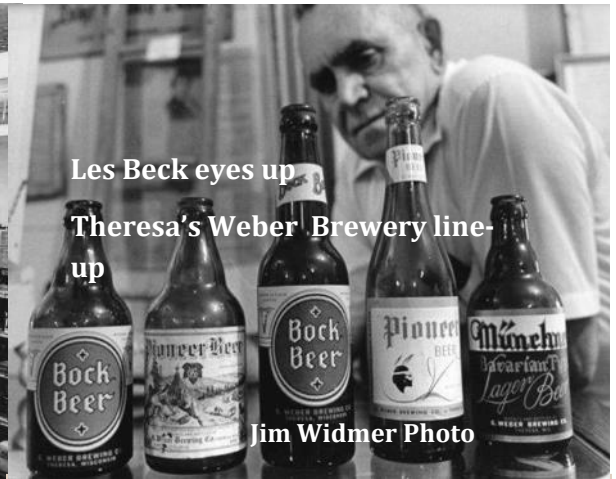
A few miles south of Theresa on the Yellowstone Trail (Hwy 175) is the village of Nenno. The L.R. Neuberg Hotel, Store, Restaurant and Saloon served passerbys on the Yellowstone Trail. The building still stands to-day.



**Today is a good day
Join the Theresa Historical Society!**

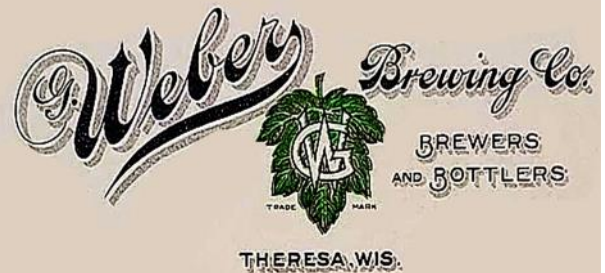


James Ruecker's Super Store in the 1980's. Now home of Joel's Confectionary.
Jim Widmer Photo



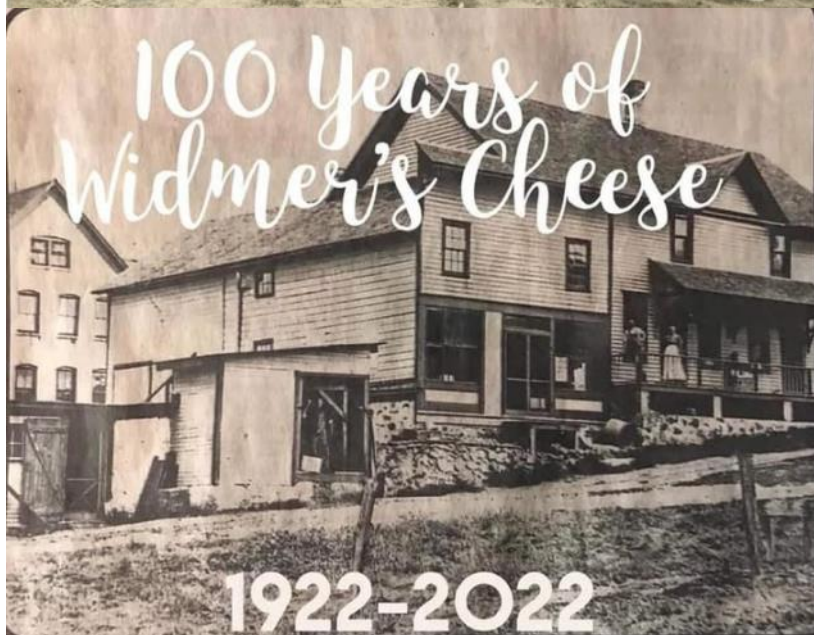
Les Beck eyes up Theresa's Weber Brewery line-up

Jim Widmer Photo

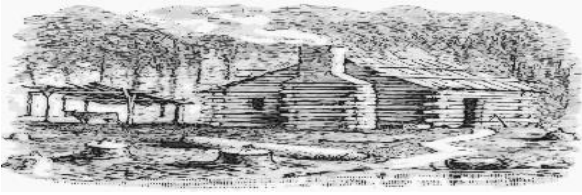


Theresa Montage

Milwaukee Sentinel Road Rally Tour comes to Theresa in 1915



meau Home in the 1920's



The earliest Theresa area pioneers had very little time for anything outside of working.

Most were clearing land, raising food to feed their families, making a living and putting a roof over their head. Just trying to survive.

The earliest memoirs from southern Theresa/northern Herman townships pioneers gives reference to the earliest farm settlers gathering in each other's home to conduct religious prayer services and discussions during the earliest days as there were no pastors or established church in the area. This led to organizing the first churches in the Theresa area, Immanuel Lutheran Church, AKA The River Church in 1847.



St Theresa's Catholic Church, founded by Bavarian missionary Fr. Charles Joseph Francis Schraudenbach. The first church built of logs. The brick Church built 18xx 1903 photo

Herman township. That same year at Theresa Village, St. Theresa's Catholic Church was established while in Leroy township, St Andrew, The Apostle, Catholic Church were formed. By 1880 there were 7 Lutheran churches, 1 Catholic church and 1 Reformed Evangelical church in Theresa township. Religion was important.

Within 20 years more than 20 other churches, Catholic, Lutheran, Methodist Episcopal (M.E), Reformed Evangelical, Baptist & other Protestant denominations were founded in the adjoining townships of Williamstown, Lomira, Wayne, Herman and Hubbard.

These early church communities were usually made up of like-minded individuals who came together because of common ethnicity, culture, language and creed. Their churches were all the social center for their members in the early years.

In time of need, these church groups often came together outside of the church, to help one another to get the work done. The pioneer lifestyle was hard, centered around endless providing for the family, as well as watching out for your friends and neighbors. Farm work was 7 days a week, from dawn till dusk clearing land, growing crops, tending to the animals and all this without running water, electrical power or mechanical assistance. In future issues will of *The Bridge* we will explore settlement patterns and church histories of the early Theresa pioneers.

Log cabin Church built in 1848-Immanuel Lutheran Church aka River Church. It was first served by Prussian Lutheran missionary circuit rider. Courtesy 1947 Immanuel Church Centennial Book

Followed in 1849 by St. Jacobi Lutheran Church also in Theresa Township. and Zum Kripplein Kristi (To the Crib of Christ) Lutheran Church in

YELLOWSTONE TRAIL DAY RUMMAGE SALE AT SOLOMON JUNEAU'S TRADING POST



Just so you know: The Theresa Village wide rummage sale is in conjunction with Yellowstone Trail day

Enjoy history and rummage!

Right here on our THS campus grounds.

Downtown Theresa!

We have some great treasures that may be of historical value to you!

Stop by and learn about history!

Find your treasure!

Saturday, June 7th in Theresa

Items we have for sale include!

Antiques

Collectibles

Vintage Home décor items

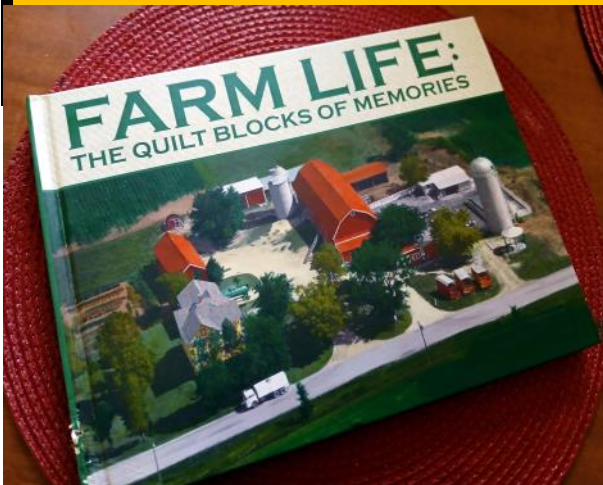
Vintage Sewing machine

Vintage Typewriter

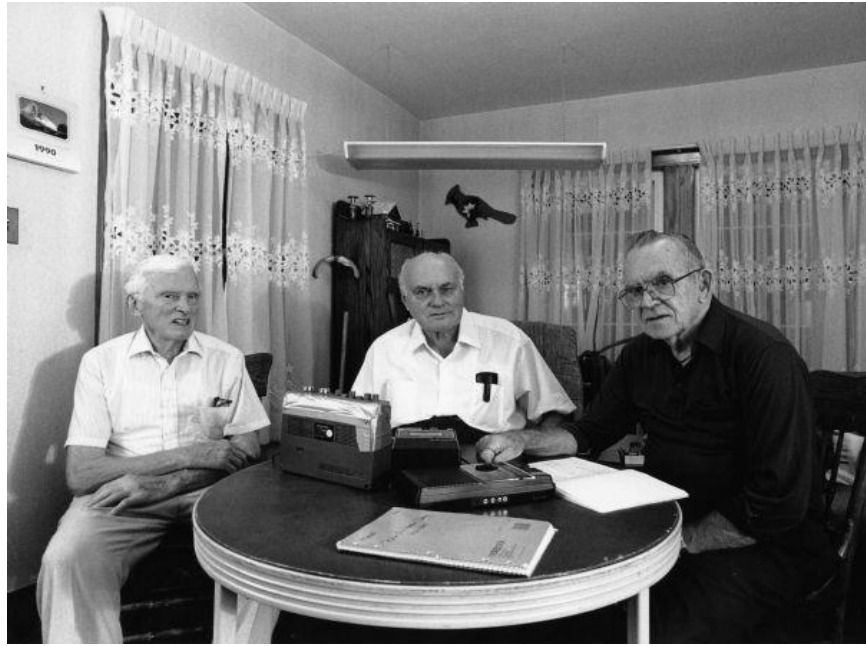
Unique Vintage Floral displays, Baskets etc.

**Wide variety of vintage collectibles
19th & 20 Century ephemera**

Feast your eyes on our treasures and make an offer to capture a piece of history for your home collection



Stop our merchandise tent. We carry Yellowstone Trail T shirts, books, banners, vintage Theresa photocard prints. We also will have other THS history merchandise. *Pick up a copy of:*
Farm Life: The Quilt blocks of Life by local author Diane Christian Boehm



Members from our THS past L-R Ralph Widmer, Fred Bandlow Les Beck Photo by Jim Widmer

Looking back on this Memorial Day holiday, we remember and salute some of the local historians that have passed on in Theresa area. They are folks who have saved the histories and stories of the by gone era. Those memorialized here are just some, not all, of the many folks who have contributed to preserving local history. If thee are some whom weve missed, let us know and lets set the wheels in motion to make them a part of the written and pictorial history of our area.

During his lifetime Les Beck of Theresa. was the principal historian in the village area. along with Jim Widmer who saluted in our March issue. Other include Russ and Fred Bandlow, John Bodden, Ralph Widmer, Peggy Langenfeld, Lester Unglaub and his wife, Evelyn.

The Unglaubs became well-known at the national level for their genealogy and historical research efforts in the area of the 'Alt Lutherische Auswanderung' (Old Lutheran Immigrants) from Prussia to Wisconsin and Dodge County in the 1839-1880 era.

Another very important person in preserving are history is Evangeline Koll,, one of the original THS founders. While she is no longer active, MS Kolls is an indelible part of our THS history.

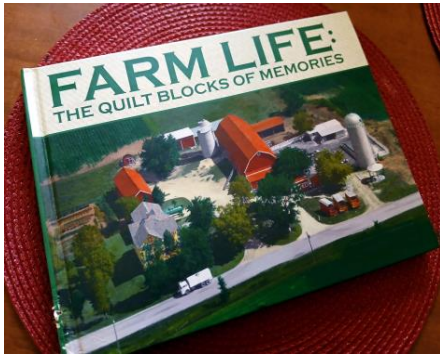
While not a member of THS the late Werner Steinbach of Theresa was also a recorder of Theresa township history, and along with the Unglaubs and Luann Ringle of Lomira were serious researchers of the "Old Lutheran Immigration".

Here's a bit more about Les Beck:

Les was born in 1914 and went to schools in Theresa. He graduated from Mayville High School in 1932. He then attended The Institute of Mortuary Science and became a part of the family furniture store and funeral business in Theresa, where he worked for 65 years until his retirement in 1978. During WWII his was a member of the US Army, "Wisconsin Red Arrow Division" and served in the South Pacific.

Beck became interested in history at an early age through his mother and would ask everyone and anyone questions about the history of the area. Later in his life, if anyone wanted to know about Theresa history they were told, "Ask Les Beck" Beck was also a founding and lifelong member of the Theresa Historical Society.

Beck wrote a history column, "It happened in Theresa" for The Mayville News back in the 1980's and 90s. His dedication to the history of the Theresa area has preserved a lot of the past for the people of today.



Limited Edition ORDER NOW!

FARM LIFE: THE Quilt Blocks of Memories

By Diane Christian Boehm

A wonderful Recollection of memories about growing up on a dairy farm in Theresa Township Dodge County, Wisconsin in the 1940s, 50 & 60s. High quality hard cover book printed on superior quality paper. Filled with stories and lots of color and Black & photos. 106 pages

Please send _____ copy/copies of FARM LIFE: THE Quilt Blocks of Memories.

I enclose \$32 per copy with free shipping & handling .

Make your check payable and mail to Theresa Historical Society, 105 Schnitzler Dr., Theresa WI. 53091.

Ship my order to : Name _____ Phone _____

Address _____

Email: _____

Theresa Historical Society is 501(c)3 tax exempt charitable organization



THE BRIDGE

The Theresa Historical Society Needs Your Help!

You can help us to continue & preserve the History of our area.
Here's how you can help !

1..Become a member: 2025 THS Historical Society membership:

\$ 15 Individual _____ \$ \$25 Family _____

\$ 50 Business Sponsor Membership _____ Business Sponsors will receive free promotional consideration ads and mentions on a space available basis in *The Bridge* newsletter.

2. Donation to the THS Historical Society:

\$100 _____ \$50 _____ \$25 _____ Other \$ _____

3. I would like to volunteer time for the society _____

4. I have artifacts to donate. Please contact me _____

Please check the appropriate lines in numbers 1-3 above

Total enclosed \$ _____

Name: _____

Address _____

Phone: (_____) _____

Email _____

Payment & Checks: Theresa Historical Society

Mailing Address RBowe 105 Schnitzler Dr. Theresa, WI 53091

Thank You For Supporting The Theresa Historical Society

Make Your Way To Theresa For Yellowstone Trail Day

SATURDAY JUNE 7

9AM to 3PM

Theresa Historical Society Campus Grounds

Summer Museum Dates: Sundays Times: 1pm to 4 pm

June 29, July 27, Aug 31, Sept 28

Learn more about local history and the Yellow Stone Trail

The Yellowstone Trail began in 1912 when a group of South Dakota businessmen worked to establish a route from Boston to Seattle for early automobile enthusiasts to travel cross country and visit Yellowstone National Park. In southeast Wisconsin, the Yellowstone Trail followed the route of Hwy. 175 in Washington, Dodge and Fond du Lac counties From Fond Du lac to Byron, Lomira, Theresa to Slinger and points in between.

Byron, Lomira, Slinger and Theresa historical societies will be open to welcome visitors

Byron Historical Society	Lomira Historical Society	Slinger Historical Museum	Theresa Historical Society
Byron Town Hall	Silver Leaf School at Sterr Park	414 Kettle Moraine Drive S.	Solomon Juneau House N3097
Highway 175	Pleasant Hill Ave.	Slinger, Wisconsin	210 S. Milwaukee ST/Hwy 175
Byron, Wisconsin	Lomira, Wisconsin		Theresa, Wisconsin

For more information, contact Jim at 262-224-9734

